

# Ecotourism against bottom trawling:



**MAIRIE DE CAMPO**

**Passive restoration of coral reefs and seagrass meadows  
in Manyange na Elombo-Campo Marine National Park**



PART OF THE

**EU MISSIONS**

**RESTORE OUR OCEAN & WATERS**



Co-funded by  
the European Union



UK Research  
and Innovation

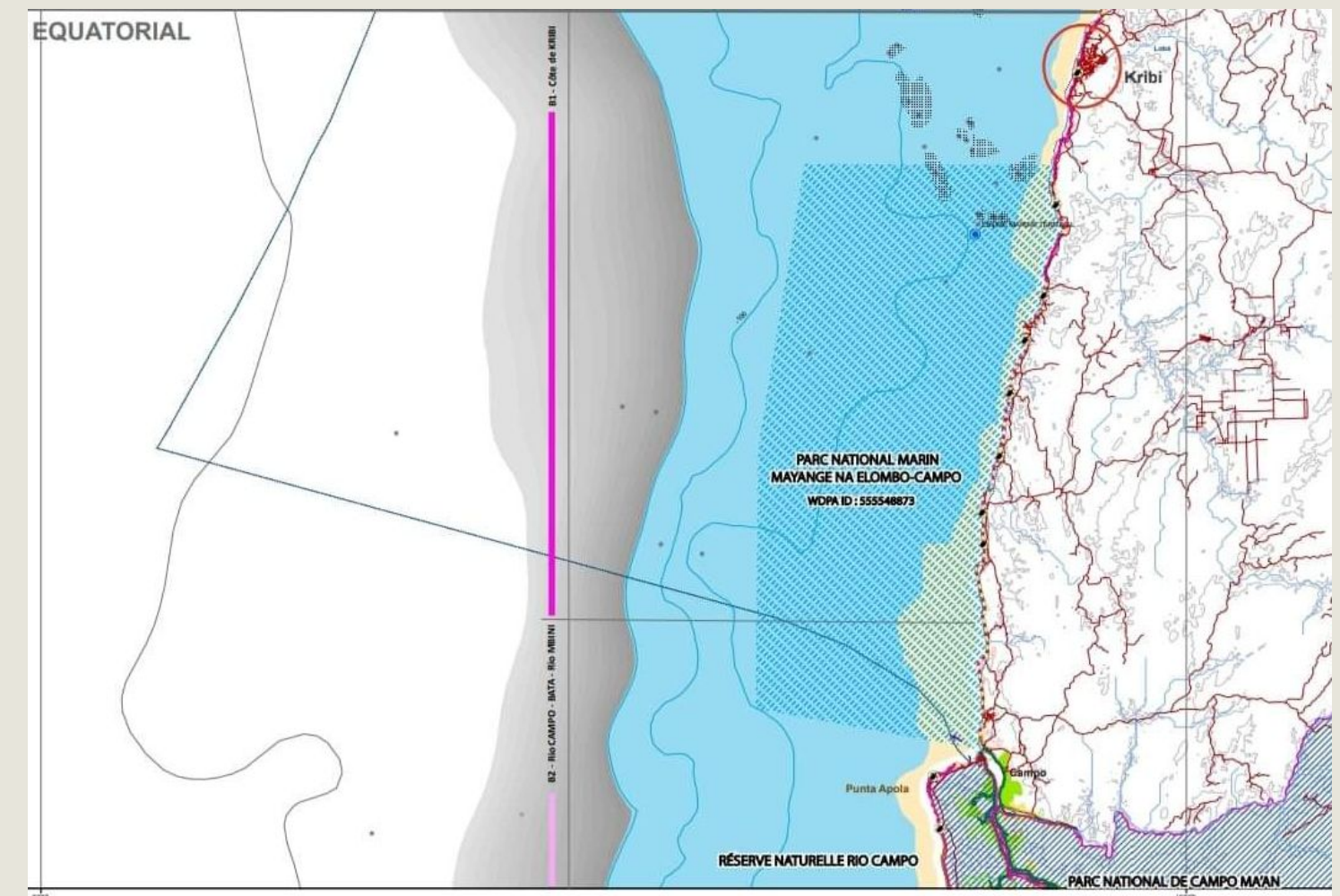
# 1. Context

Presentation of the Park

The Marine National Park Manyangue Na Elombo Campo is Cameroon's first marine protected area.

Creation date: Decree No. 2021/4804/PM from 09 July 2021

Surface area: 113,300 ha | Buffer zone: 3,400 ha



# Welcome

To the

Marine National Park Manyangue Na Elombo Campo  
South , Cameroon



# History of the Park

## □ Creation of the Park

According to its decree of creation, the Manyangue Na Elombo Campo Marine National Park is a marine and coastal protected area, contiguous with Equatorial Guinea.

## □ Challenges of Delimitation

If the delimitation at the level of its marine part does not pose any problems because the presence of the port of Kribi and the oil installations act as milestones on the sea.

If the problem arises more particularly in the ocean area; There have been problems on the mainland side as local communities have seen their traditional lands grabbed for the benefit of the park without compensation for the expropriation

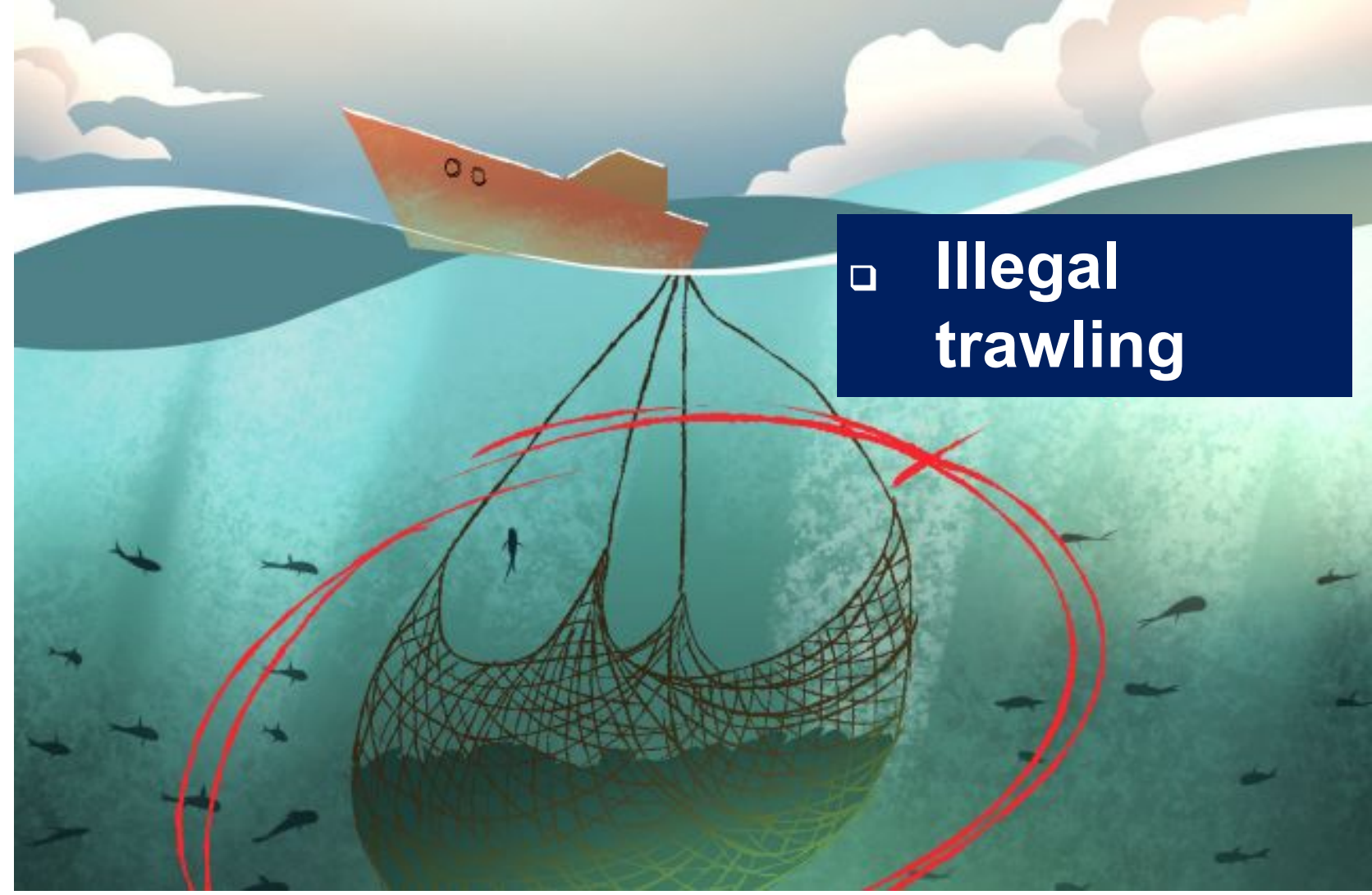
## □ Voices of Communities

Faced with this situation, traditional chiefdoms and community associations have lobbied for the delimitation of the marine park to be reviewed. Thus, on the basis of respect for customary law and communities; the State has listened to the grievances of the local residents to redefine the boundaries of the park by leaving the coastal part to the uses of the indigenous people of these territories.

## □ Ecotourism for Coastal Restoration as Opportunity for the Park

Ecotourism becomes a national challenge of the marine park wishes to develop its site for ecotourism purposes and thus contribute to the enhancement of the coastal landscape of the marine protected area.

Challenges of Delimitation



Illegal trawling



**Illegal, Unreported, and Unregulated (IUU) fishing**

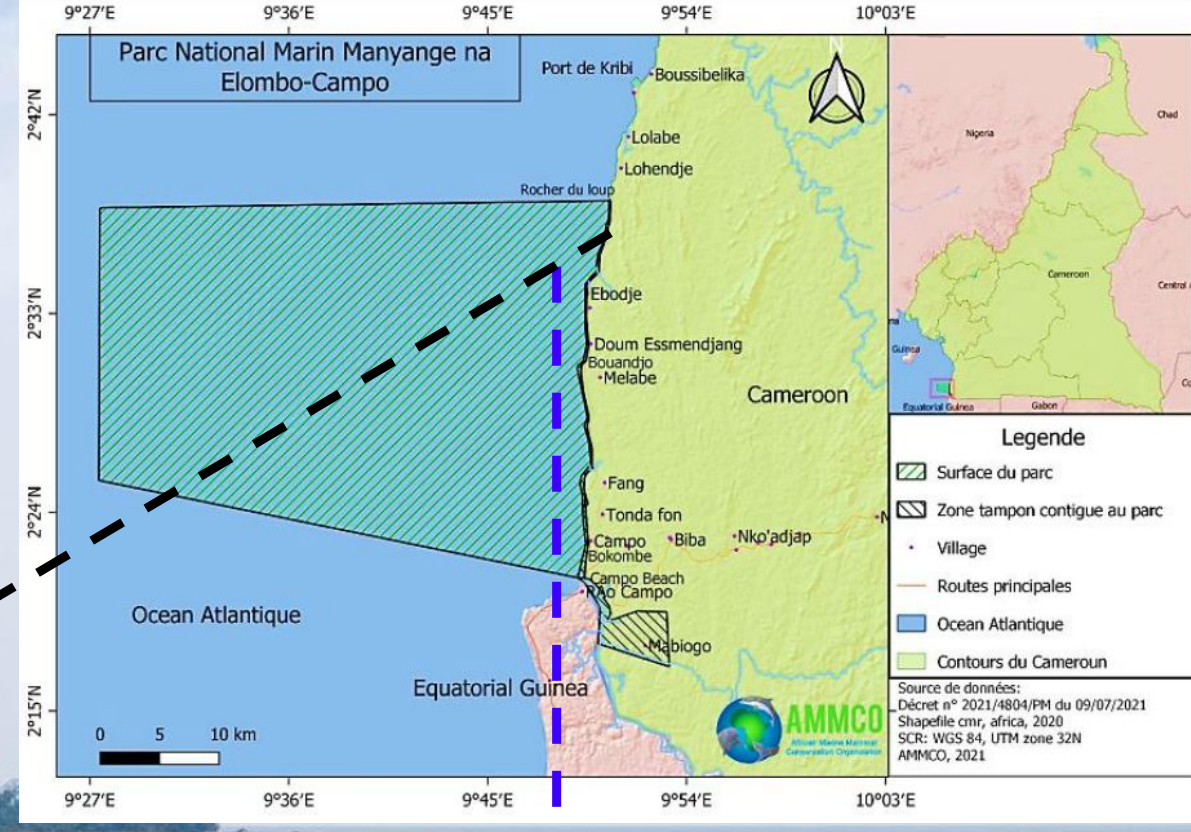
**La Cause Principale : Le Fléau du Chalutage Illégal**  
 Plus de deux décennies de pêche illicite, non déclarée et non réglementée (INN) ont systématiquement dégradé les fonds marins.

**Les Conséquences Écologiques : Des Habitats Naturels Détruits**  
 Destruction des zones d'abri, de reproduction et d'alimentation, essentielles au cycle de vie de la faune marine.

**Le Coût Humain : Des Stocks Halieutiques Épuisés**  
 Une réduction drastique des captures pour les pêcheurs artisanaux, compromettant la sécurité alimentaire et l'économie vitale des communautés côtières.

# Park Landscape Areas

## Coastal Landscape



## Seascape





*African Ray*



*Hawksbill Turtle*



*Humpback Whale*



*Olive Ridley Turtle*



*Green Turtle*



*Sperm Whale*



*Atlantic Humpback Dolphin*



*Leatherback Turtle*



*Various species of sharks*



*African manatees*



**Fine-Mesh Nets**



**Abandoned or "Ghost" Nets**



**Prohibited Industrial Fishing Gear**

# Co-creation process



## Survey & Interviews

- **Local actors:** What are the ecological issues? Marine **National Park:** What are the enforcement issues?



## Workshop - Solutions Discussions

- **Scientific:** What can we do to fix these issues?
- **Tourism:** Eco-tourism as a solution?



## Pitch to the Municipality

### Presentation of:

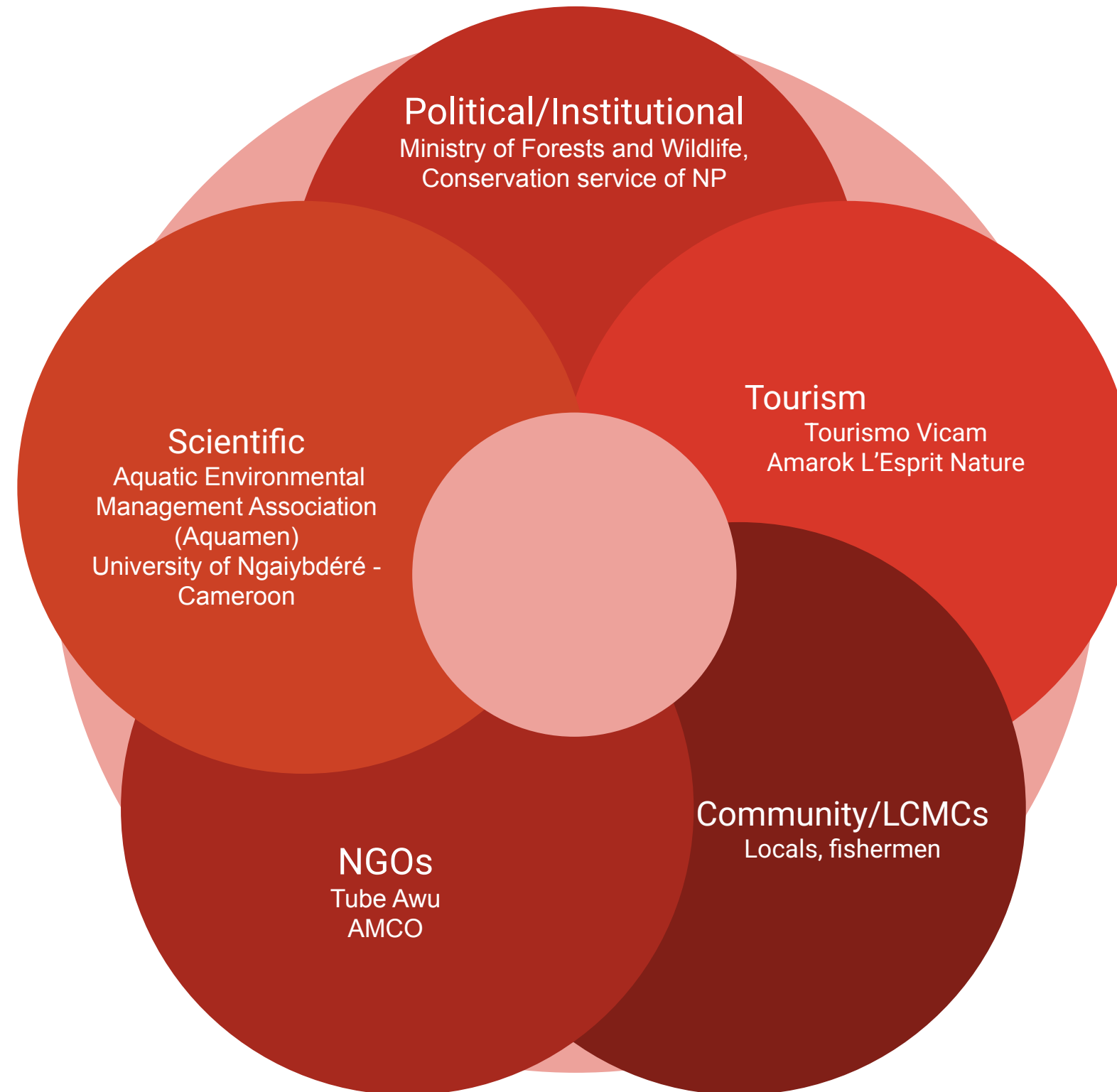
- Living Lab
- Ecotourism solution
- What we need



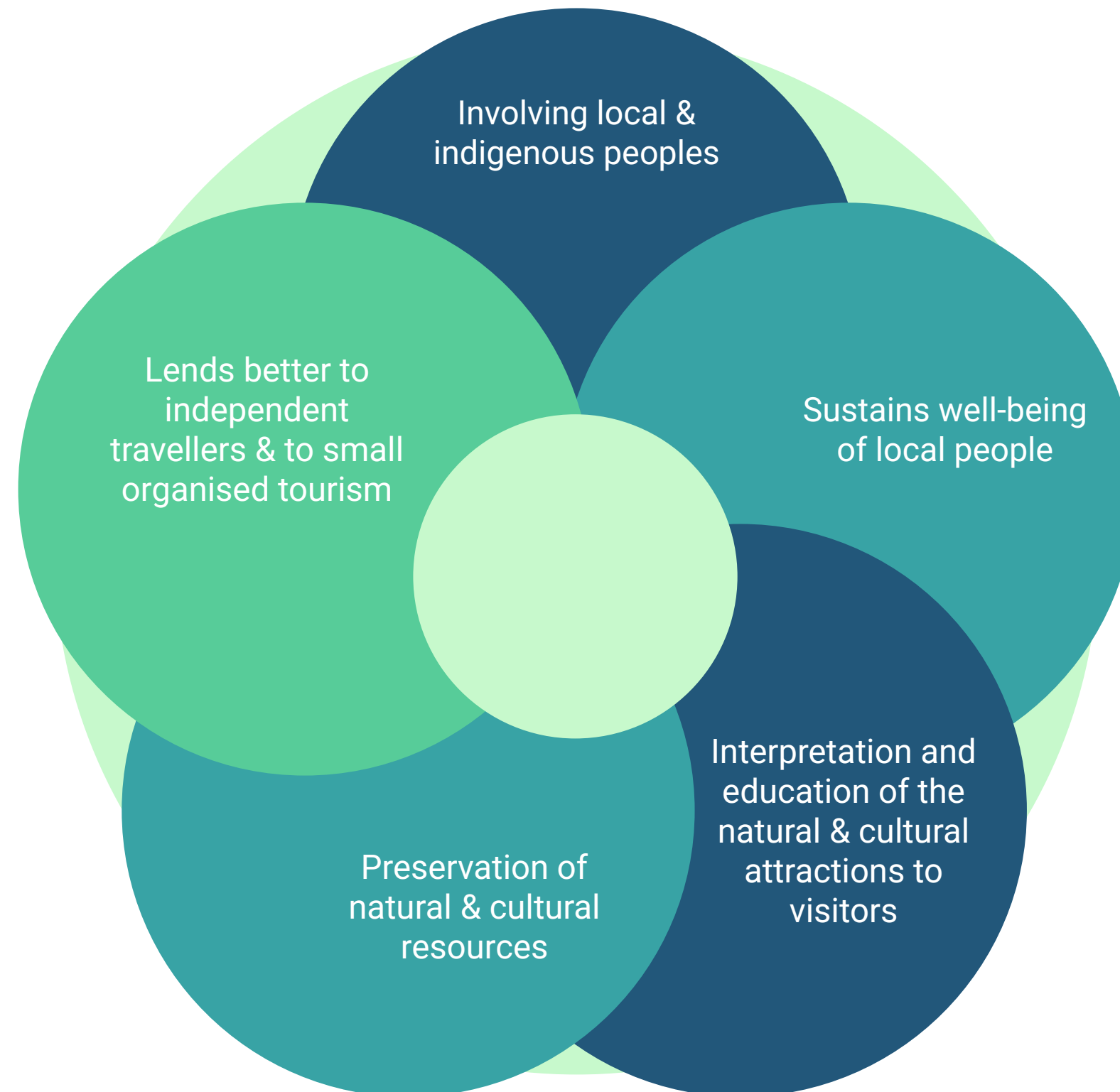
## Getting ready for implementation

- Implementing the “eco” tax
- Buying survey & material for MPA
- Developing the tourism models

# Actors



# Ecotourism



# Our proposal



## 1. Growing the nature-based tourism sector

Expanding existing businesses : whale watching, diving, fishing, snorkeling

Helping the creation of new businesses and professional transitions

Promotion of sustainable tourism online targeting ocean lovers



## 2. Ensuring ecotourism

Training sessions on animal welfare and illegal activity reporting

Citizen science programme to monitor restoration and impacts

Volunteering opportunities for young scientists



## 3. Developing a fund to support MPA protection

Creation of an “EcoTax” for entering the National Park to fund resources

# Benefits & Risks (PEST analysis)



1. Growing the nature-based tourism sector



2. Ensuring ecotourism



3. Developing a fund to support MPA protection

## Environment

- Supporting seafloor recovery (coral reefs and seagrass meadows) by deterring bottom trawling
- Ecosystem services including coastal protection, habitat for key commercial and protected species

## Social

- Well-being of the local population
- Community building
- Job opportunities

## Knowledge

- Monitoring of seafloor state
- Data collection about key species

## Economic

- Revenues for tourism operators
- Replenishing fish stocks for current and future fisheries
- Diversification of economic sectors

## Risks avoidance plan

- Overtourism => targeting specific touristic audience, establish daily visiting quota in the MPA
- Lack of incentives => progressive EcoTax, purchase and maintenance aids, training supports



# Business model

## Value Proposition and Key Activities



## Beneficiaries

- Local communities : inhabitants of Campo, Kribi
- Local Tourism related Businesses
- Management of the National Park
- Tourists
- Fisheries

## Channels

- Local workshops
- Tourism agencies and operators
- Online marketing: tourism websites

## Partners

- Research Institutions
- National Park Management
- NGOs
- Businesses
- Local community

# Business model



## Key Resources

- **Human capital:** universities, tourism agencies and operators, local population
- **Financial resources:** private investors, public funds, service sales
- **Capital:** boats, equipment for touristic activities, equipment for monitoring and data collection, softwares for activity booking and data collection, offices for tour operators and agencies

## Cost Structure

- **Initial setup costs:**
  - boats, equipment for fishing/whale watching/diving/snorkeling
  - training sessions
  - professional transitioning training
  - booking applications license fees
- **Operational costs:**
  - salaries
  - maintenance of capital (boat, equipment)
  - marketing
- **Monitoring costs:**
  - training sessions for operators, equipment and licensing fees for data collection applications
  - creation of a volunteering programme (housing, equipment, etc)



## Revenue Structure/Streams

- **Service sales** (tourism activities, paid volunteering)
- **EcoTax**
- **Funding provided by public** international Structures (UN, AFD, municipality ? :) ) for economic development and for scientific projects (monitoring and restoration)
- **Private investors** (mainly local businesses)
- **Ecosystem services revenue:** improved well-being, avoided cost provided by coral reef coastal protection, replenition of fish stocks for local fisheries, etc



# Policy dimension



- National Law N°2024/008 on Forest and Fauna protection, which integrates MPA management, harsher penalties against illegal fishing and updated protection laws for threatened ecosystems, habitats and species.
- Regional sea conventions (such as Abidjan Convention) on threatened species and habitat protection
- No national tourism policy and no national (eco) tourism planning in Cameroon (Forje and Tchamba, 2022)

# The ask

01	Knowledge transfer	<ul style="list-style-type: none"><li>• Training guides as data collectors of the MPA</li><li>• Launch 'Eco-skipper' certification</li></ul>
02	Funding	<ul style="list-style-type: none"><li>• Targeted marketing plan for the area</li><li>• One-time grant to offset initial costs</li></ul>
03	Join our living lab!	<ul style="list-style-type: none"><li>• Real time environmental monitoring</li><li>• Policy Incubator: Best practices for responsible &amp; ecological tourism</li><li>• Eco-tax Park Fee</li></ul>



# Thank you !



**MAIRIE DE CAMPO**



PART OF THE  
**EU MISSIONS**  
RESTORE OUR OCEAN & WATERS



Co-funded by  
the European Union



UK Research  
and Innovation